

VS.P.C. BOARD MEMORY BOOST REQUIRED FOR VS.GUMSHOE PAK

INSTRUCTION FOR VS. MEMORY BOOST MODIFICATION:

ENCLOSED IN YOUR VS.GUMSHOE PAK ARE TWO(2) PRE-CUT "JUMPER" WIRES, SOME OF THE NEWER VS. PAKS REQUIRE A MEMORY EXPANSION MODIFICATION. PERFORM THE MODIFICATION AS PER THE DIAGRAMS BELOW, AFTER THIS MODIFICATION, THE P.C. BOARD WILL BE COMPATIBLE WITH ALL VS.PAKS PAST AND PRESENT.

NOTE:

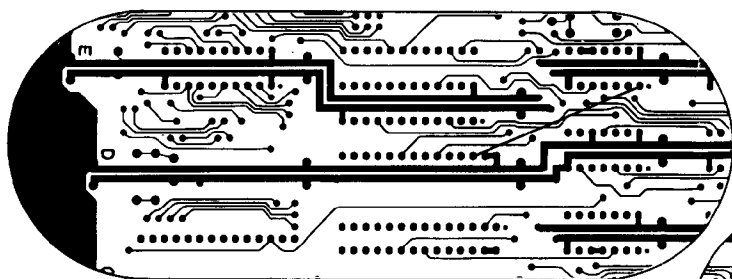
THE WIRES MAY BE ATTACHED BETTER IF THE SOLDER IS REMOVED FROM THE PINS AND THE WIRE THEN HOOKED AROUND THE PINS BEFORE SOLDERING. ALSO, BE SURE TO GET THE WIRES AS TAUT AS POSSIBLE TO PREVENT SNAGGING.

"SUB" SIDE

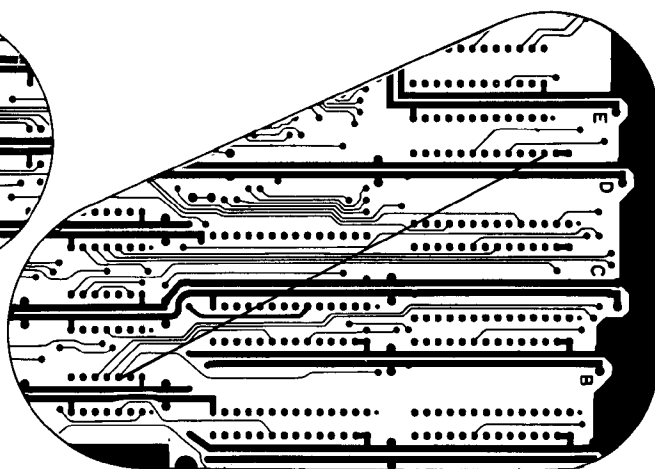
6D, PIN 26(SOCKET) TO 5E, PIN 1(74LS04)

"MAIN" SIDE

1D, PIN 26(SOCKET) TO
4A, PIN 12(74LS32)



MDS P.C. BOARD - SOLDER SIDE



8

7

6

5

4

3

2

1

Nintendo®