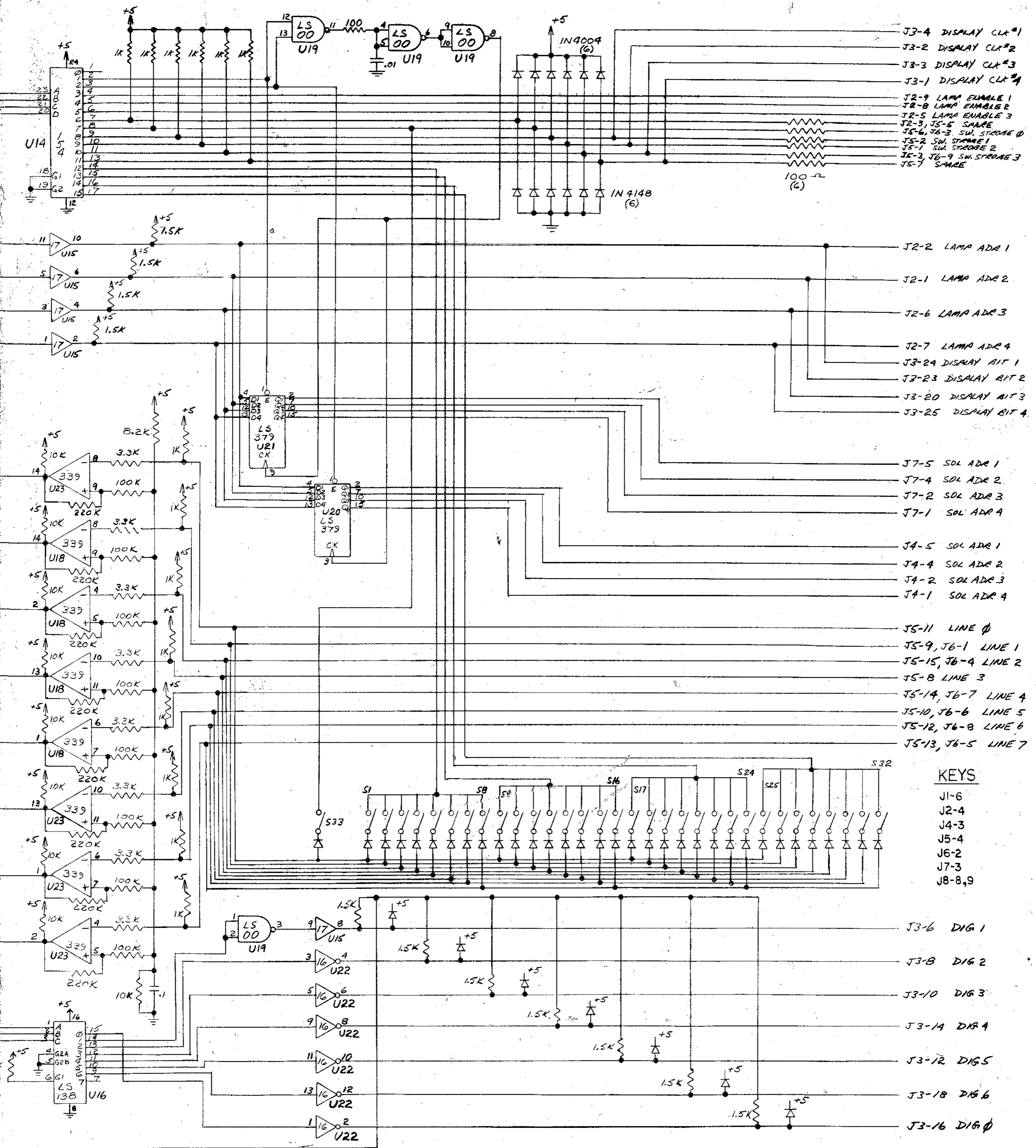


+5V J1-1
 DISPLAY +5V J3-26
 GND J1-2
 DISA. LOGIC GND J3-21

DISPLAY + IN
 J1-4
 J1-5
 J1-7
 J1-8
 J1-9
 J1-10

J3-13
 J3-15
 J3-17
 J3-19
 J3-5
 J3-7
 J3-9
 J3-11
 DISPLAY GND OUT
 DISPLAY + OUT

FLIPPER J7-8
 CHUCK-A-MUCE SPACE J7-7
 ENABLE J3-22



- J3-4 DISPLAY CLK*1
- J3-2 DISPLAY CLK*2
- J3-3 DISPLAY CLK*3
- J3-1 DISPLAY CLK*4
- J2-9 LAMP ENABLE 1
- J2-8 LAMP ENABLE 2
- J2-5 LAMP ENABLE 3
- J2-3, J5-5 SAME
- J5-6, J6-3 SW. STORAGE 0
- J5-2 SW. STORAGE 1
- J5-1 SW. STORAGE 2
- J6-3, J6-9 SW. STORAGE 3
- J5-7 SAME
- J2-2 LAMP ADDR 1
- J2-1 LAMP ADDR 2
- J2-6 LAMP ADDR 3
- J2-7 LAMP ADDR 4
- J3-24 DISPLAY BIT 1
- J3-23 DISPLAY BIT 2
- J3-20 DISPLAY BIT 3
- J3-25 DISPLAY BIT 4
- J7-5 SOL ADDR 1
- J7-4 SOL ADDR 2
- J7-2 SOL ADDR 3
- J7-1 SOL ADDR 4
- J4-5 SOL ADDR 1
- J4-4 SOL ADDR 2
- J4-2 SOL ADDR 3
- J4-1 SOL ADDR 4
- J5-11 LINE 0
- J5-9, J6-1 LINE 1
- J5-15, J6-4 LINE 2
- J5-8 LINE 3
- J5-14, J6-7 LINE 4
- J5-10, J6-6 LINE 5
- J5-12, J6-8 LINE 6
- J5-13, J6-5 LINE 7

KEYS

- J1-6
- J2-4
- J4-3
- J5-4
- J6-2
- J7-3
- J8-8,9

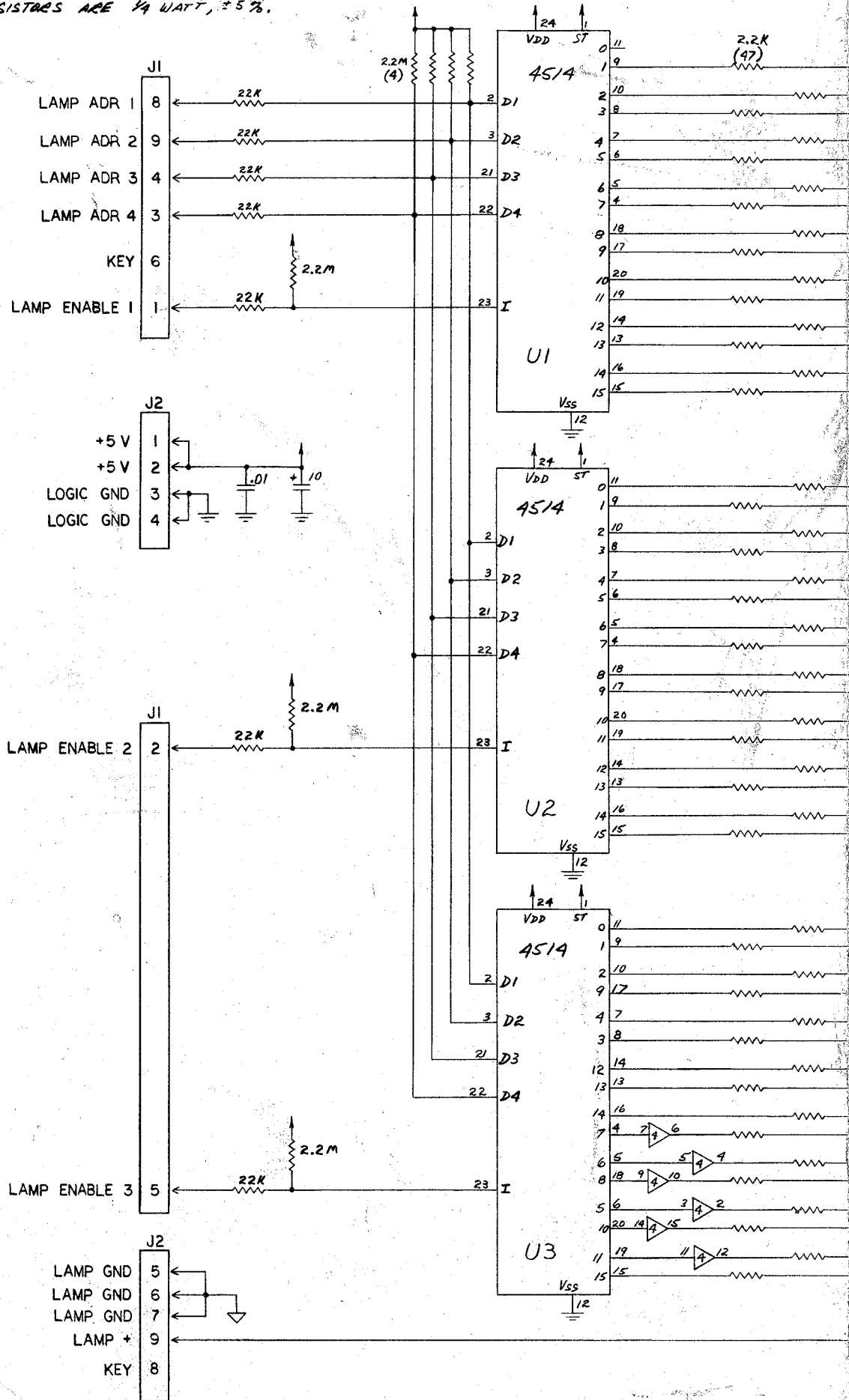
B WAS 100K, ECN 101008 10-3-78 AW
 A WAS 4.7K & 7.5V 8-1-78 AW

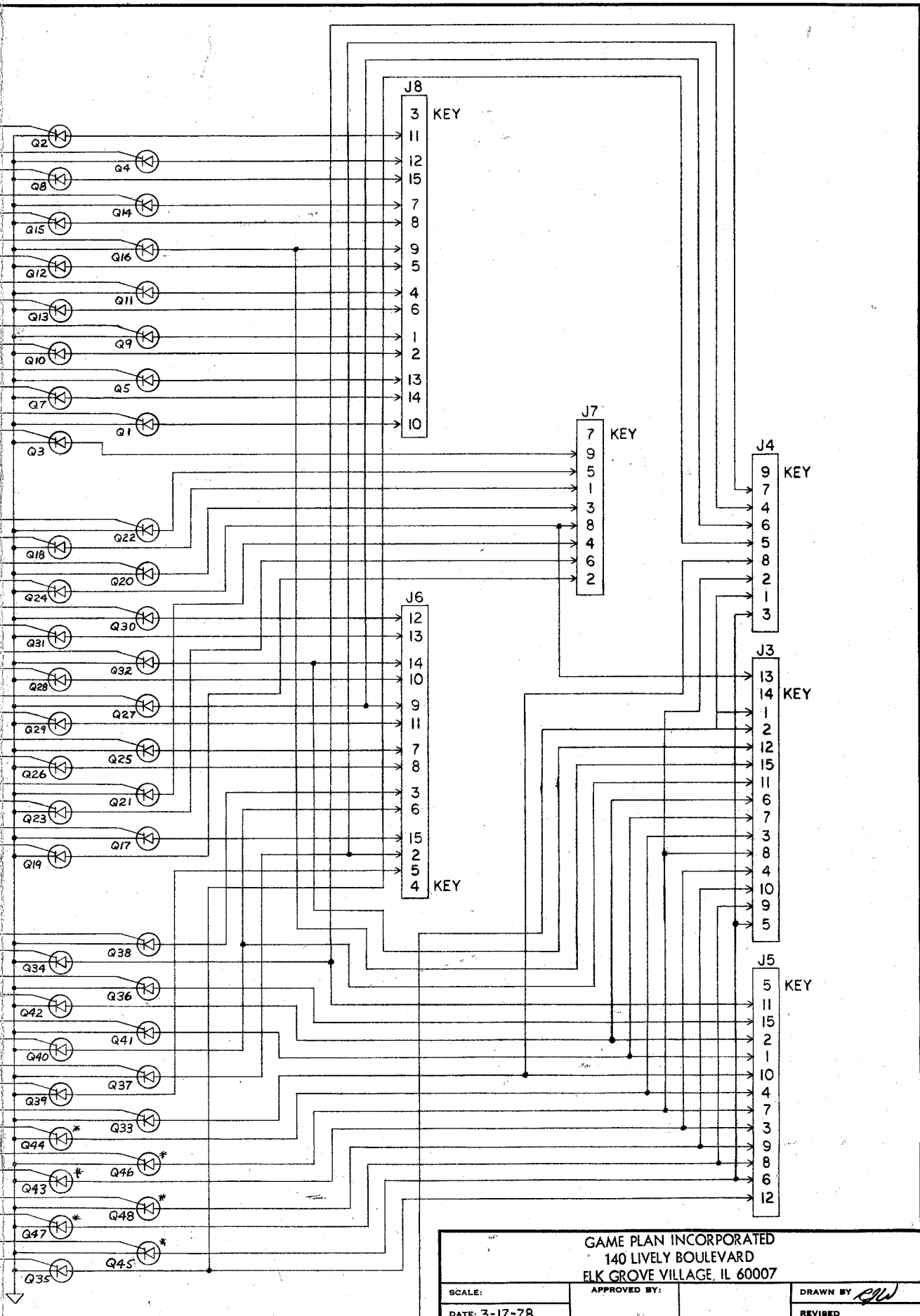
CUT # STRAP 3		CUT # STRAP 2		CUT # STRAP 1		AS SHOWN	
B2716	U12 0000-07FF	2332	U12 0000-0FFF	2716	U12 0000-07FF	2316E	U12 0000-07FF
B2716	U13 0800-0FFF	2332	U13 1000-1FFF	2716	U13 0800-0FFF	2316E	U13 0800-0FFF
						RAM	8C00-8CFF
						6810	8D00-8DFF
						8255	A 04
							B 05
							C 06
						CONT.	07
						CTC CH.1	08
						CH.2	09
						CH.3	0A
						CH.4	0B

GAME PLAN INCORPORATED
 140 LIVELY BOULEVARD
 ELK GROVE VILLAGE, IL 60007

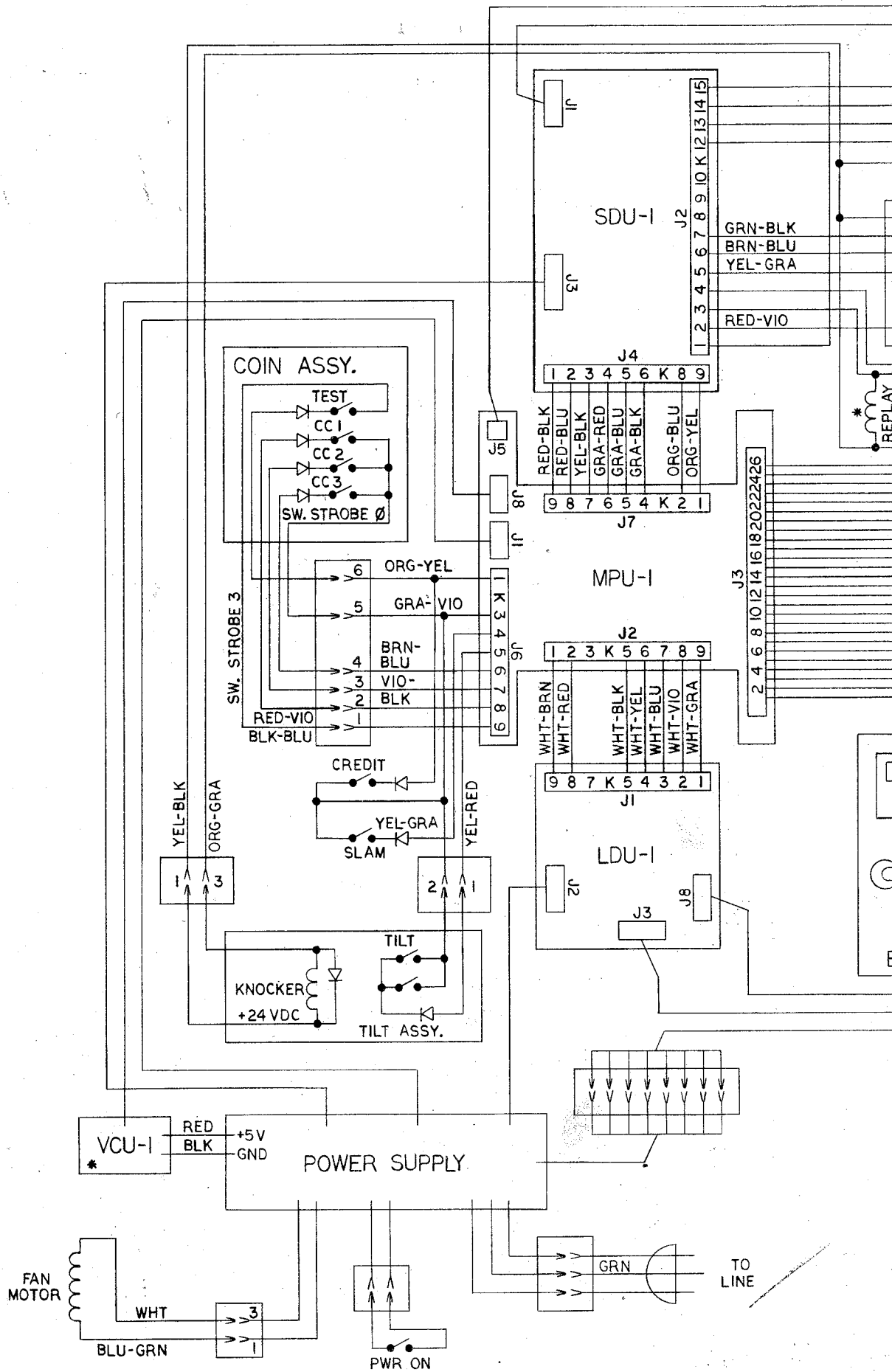
SCALE:	APPROVED BY:	DRAWN BY: <i>R&</i>
DATE: 10/14/77		REVISED:
MPU-1 SCHEMATIC		DRAWING NUMBER: 02-70003D

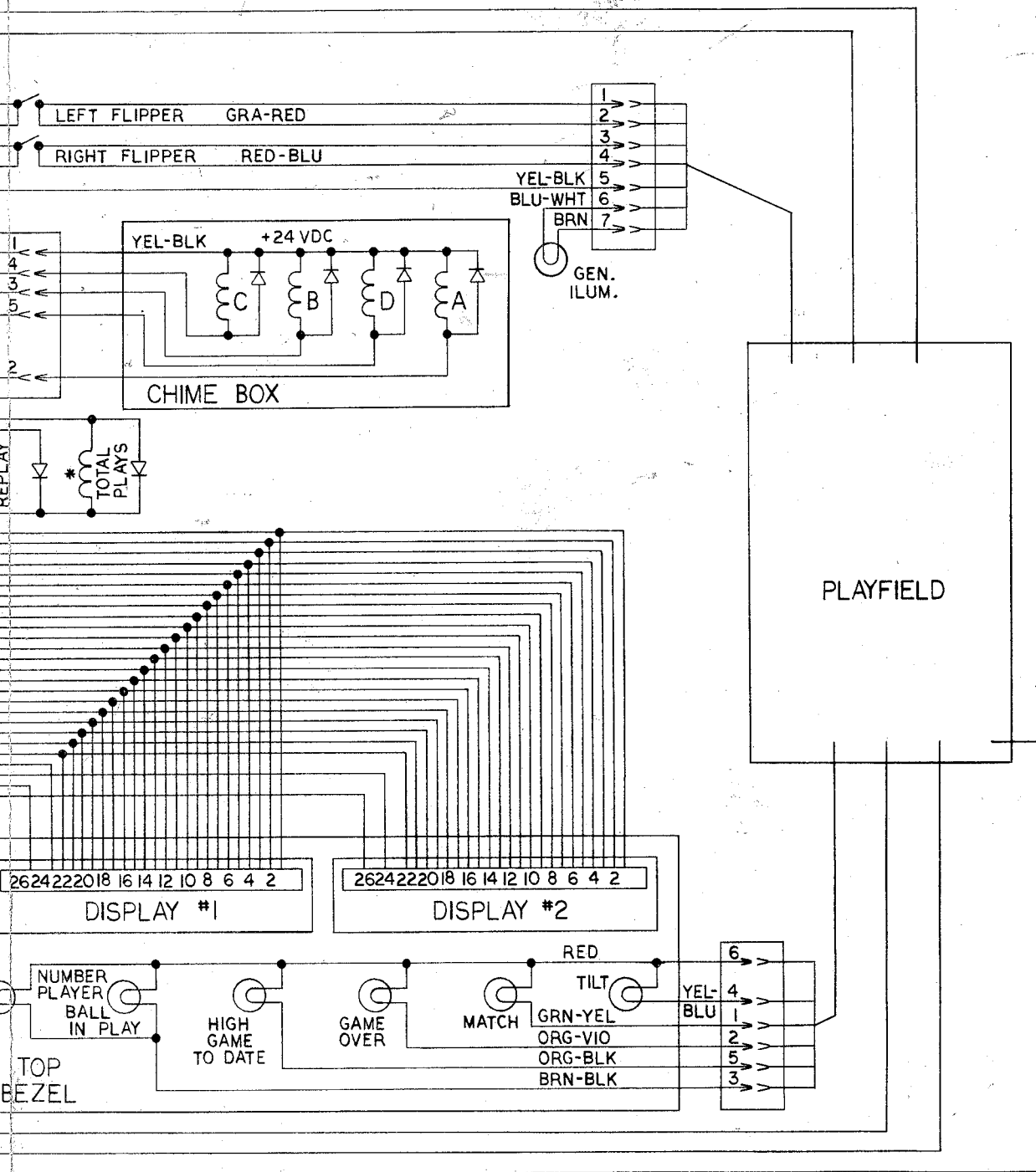
1. * SCR IS A MCR106-1. ALL OTHERS ARE 2NS060.
2. BUFFER IS 1/6 OF A 4050.
3. ALL RESISTORS ARE 1/4 WATT, ±5%.





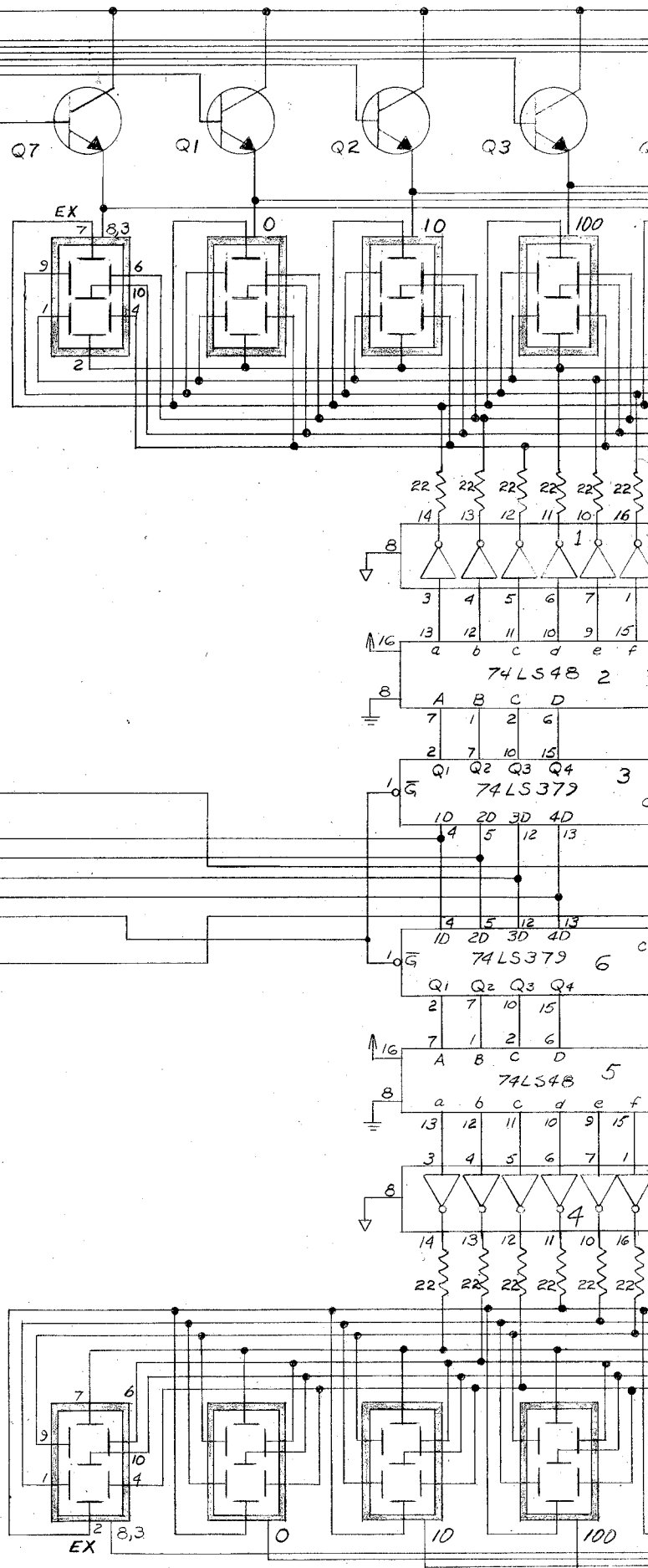
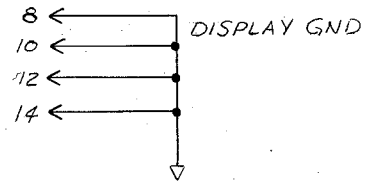
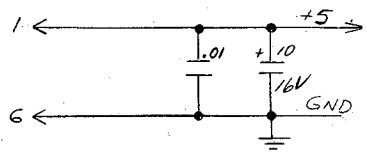
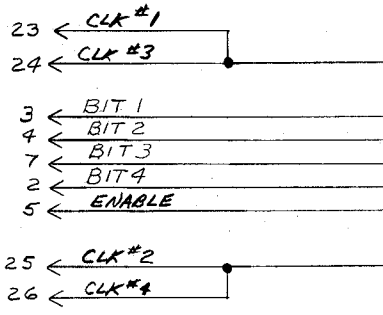
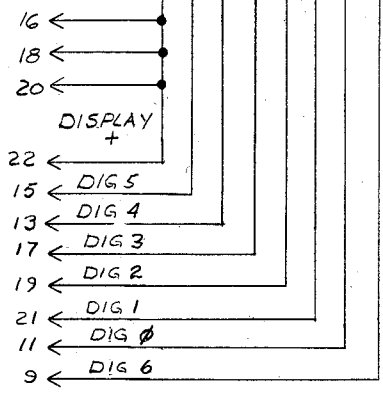
GAME PLAN INCORPORATED 140 LIVELY BOULEVARD ELK GROVE VILLAGE, IL 60007			
SCALE:	APPROVED BY:	DRAWN BY <i>ELW</i>	
DATE: 3-17-78		REVISED	
LDU-1 LAMP DRIVER UNIT			DRAWING NUMBER 02-7000IC

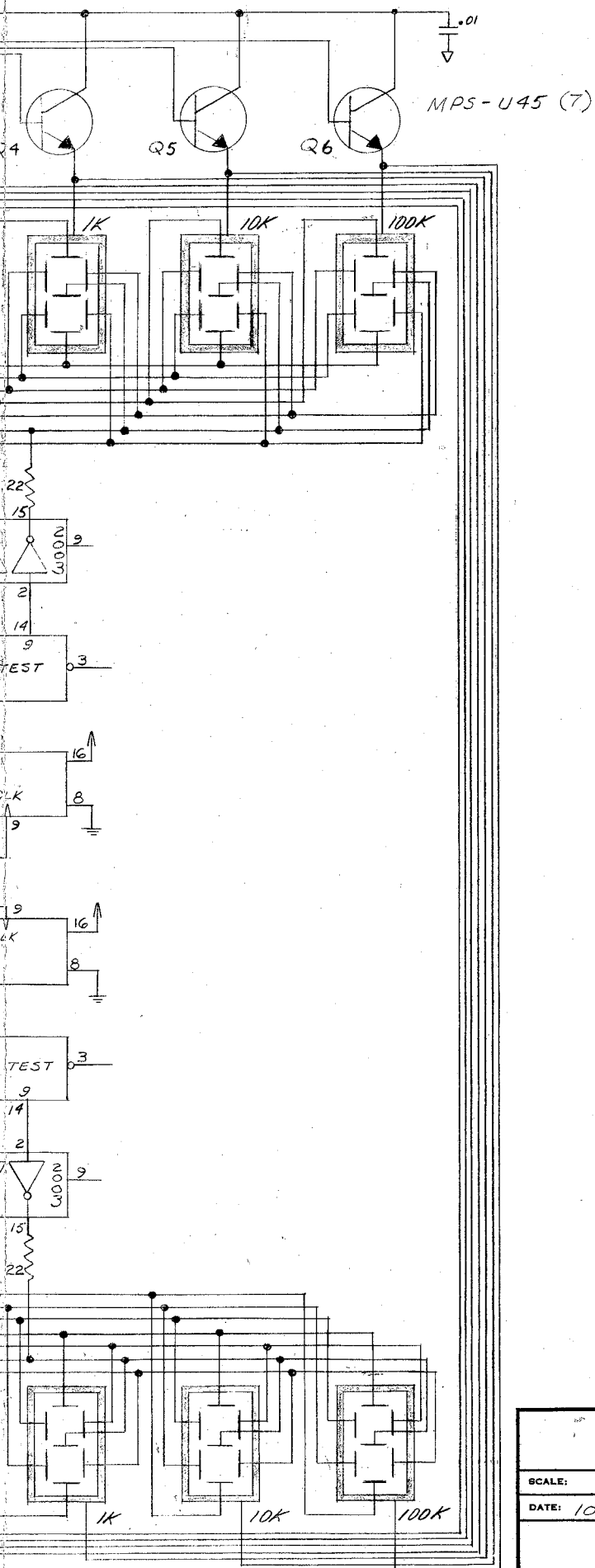




1. ALL DIODES ARE IN4004.
2. * = OPTIONAL PARTS.

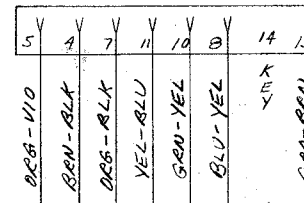
GAME PLAN INCORPORATED 140 LIVELY BOULEVARD ELK GROVE VILLAGE, IL 60007			
SCALE:	APPROVED BY:	DRAWN BY <i>AW</i>	
DATE: 6-12-78		REVISED	
MODEL 110 CABINET WIRING		DRAWING NUMBER 02-70007C	



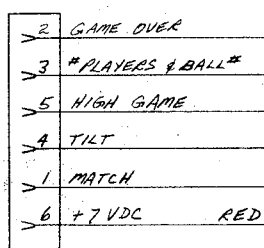


GAME PLAN INCORPORATED 140 LIVELY BOULEVARD ELK GROVE VILLAGE, IL 60007		
SCALE:	APPROVED BY:	DRAWN BY <i>RS</i>
DATE: 10-19-77		REVISED
DDU-I DISPLAY SCHEMATIC		DRAWING NUMBER 02-70002C

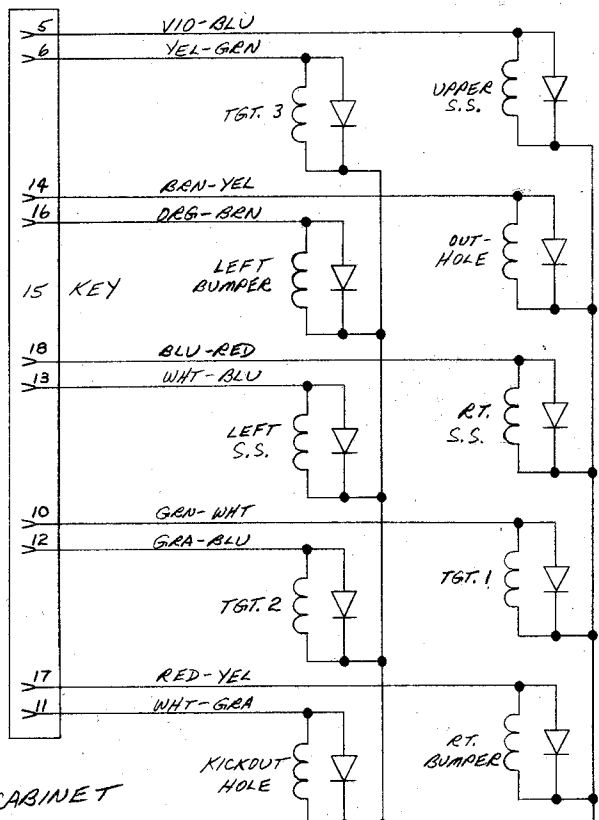
TO J3 ON



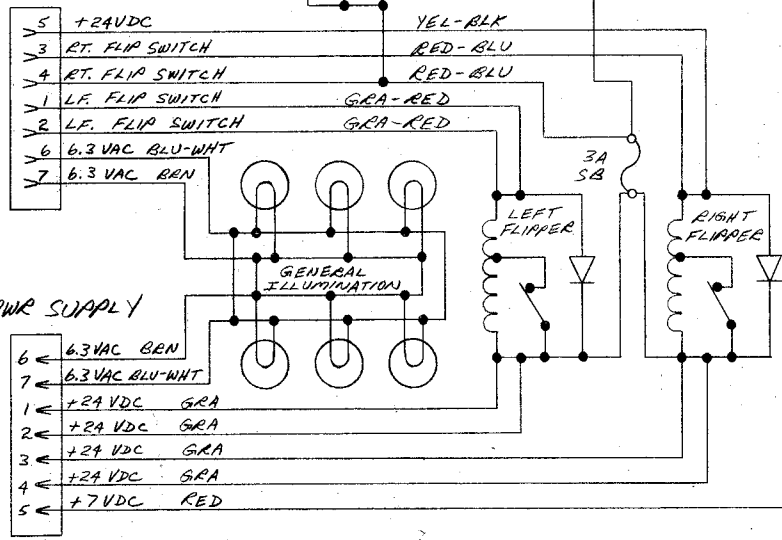
TO TOP REZEL



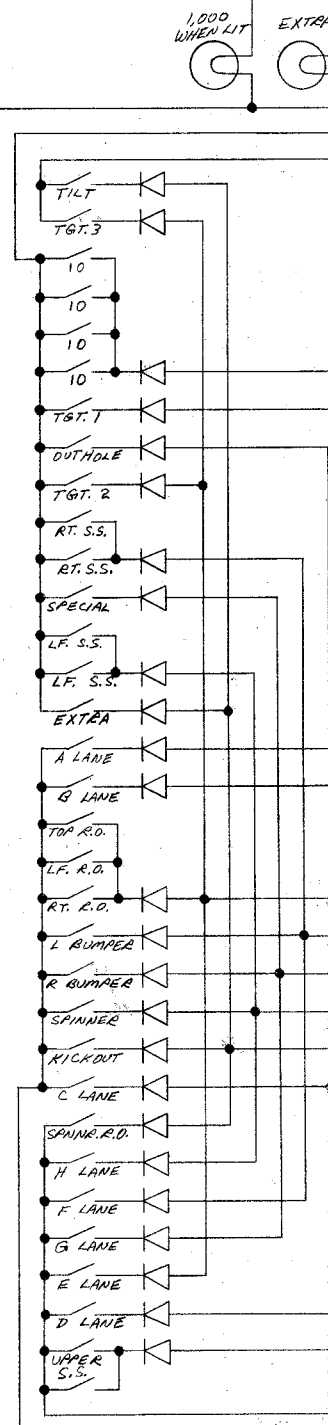
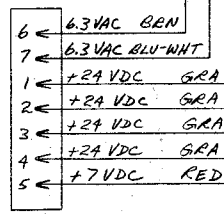
TO J1 ON SDU-1



TO CABINET

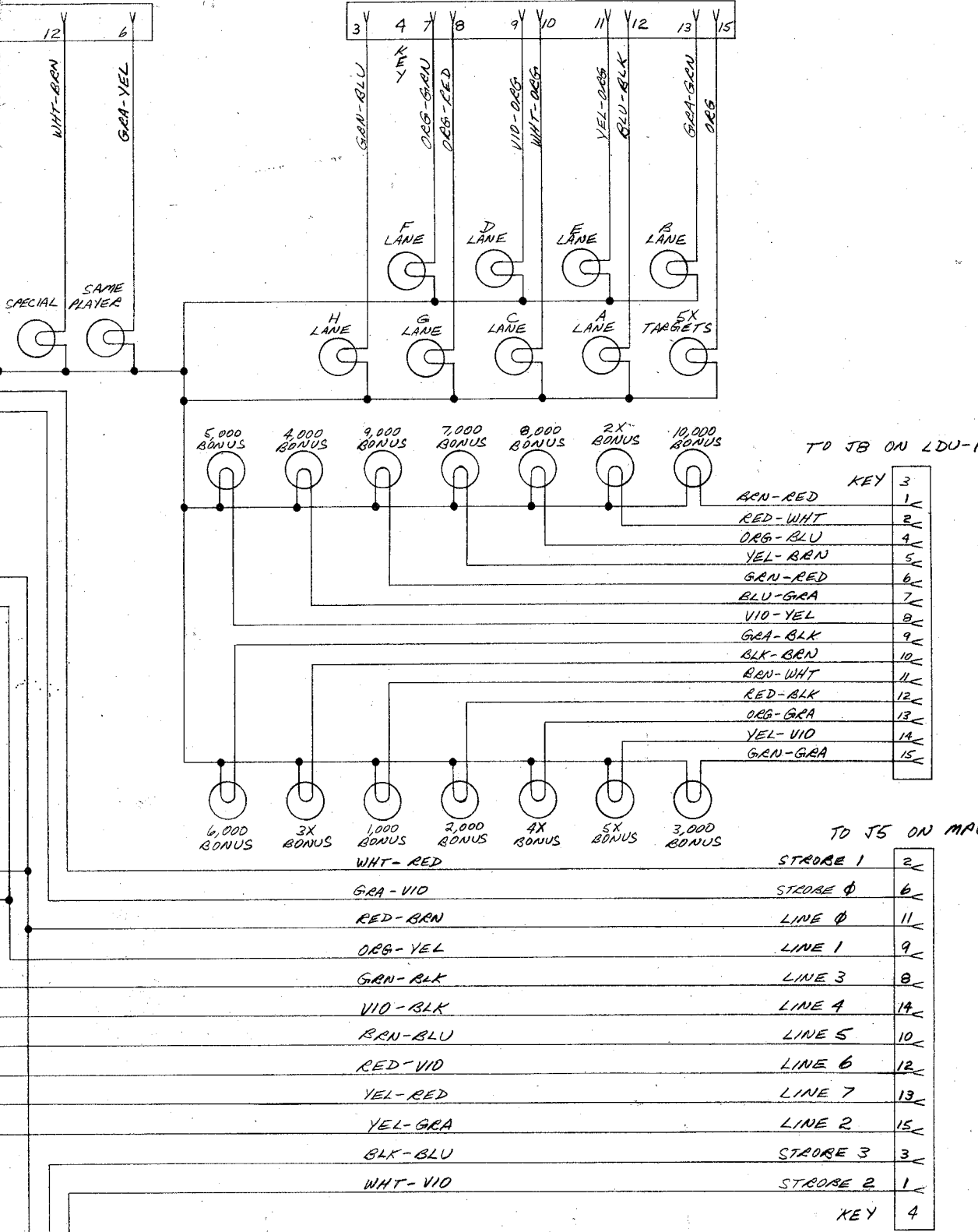


TO PWR SUPPLY



LDU-1

TO J6 ON LDU-1



TO J8 ON LDU-1

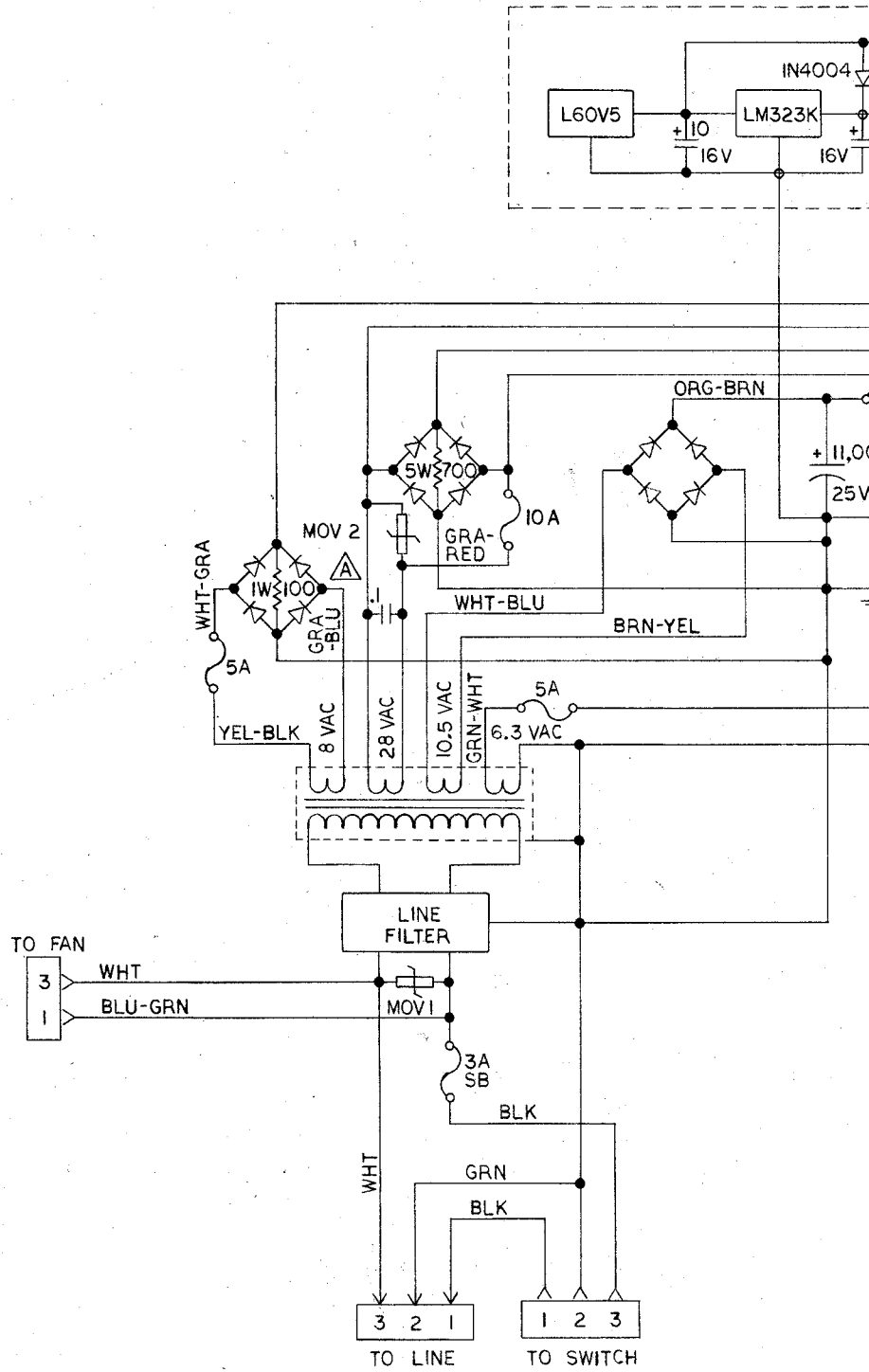
TO J5 ON MAU

	KEY
BRN-RED	3
RED-WHT	1
ORG-BLU	4
YEL-BRN	5
GRN-RED	6
BLU-GRA	7
VIO-YEL	8
GRA-BLK	9
BLK-BRN	10
BRN-WHT	11
RED-BLK	12
ORG-GRA	13
YEL-VIO	14
GRN-GRA	15

WHT-RED	STROBE 1	2
GRA-VIO	STROBE 0	6
RED-BRN	LINE 0	11
ORG-YEL	LINE 1	9
GRN-BLK	LINE 3	8
VIO-BLK	LINE 4	14
BRN-BLU	LINE 5	10
RED-VIO	LINE 6	12
YEL-RED	LINE 7	13
YEL-GRA	LINE 2	15
BLK-BLU	STROBE 3	3
WHT-VIO	STROBE 2	1
	KEY	4

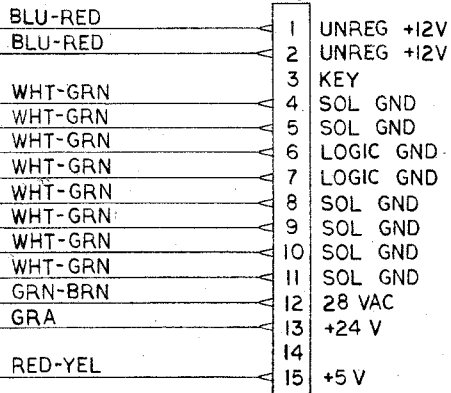
GAME PLAN INCORPORATED 140 LIVELY BOULEVARD ELK GROVE VILLAGE, IL 60007.			
SCALE:	APPROVED BY:	DRAWN BY <i>flw</i>	
DATE: 11-9-78		REVISED	
MODEL 120 PLAYFIELD		DRAWING NUMBER 02-70010C	

1. RECTIFIER BRIDGES ARE 25 AMP AND 200 VOLT PIV.
2. MOV1 IS A V130LA10A FOR 120 VAC LINE AND A V250LA20A FOR 240 VAC LINE.
3. MOV2 IS A V82ZA12.



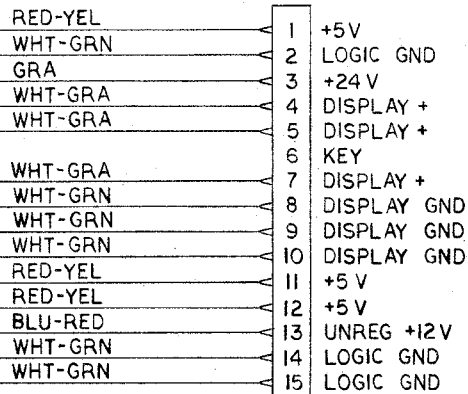
TO SOLENOID DRIVER UNIT

J3



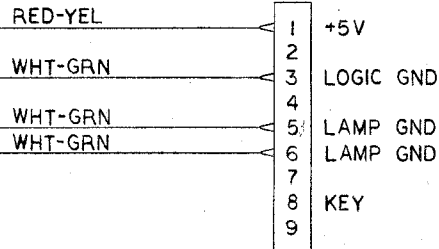
TO MICROPROCESSOR UNIT

J1



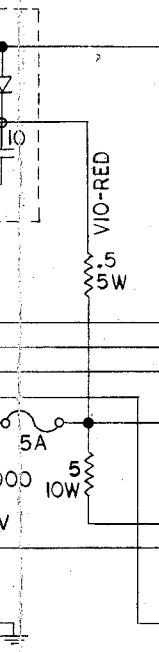
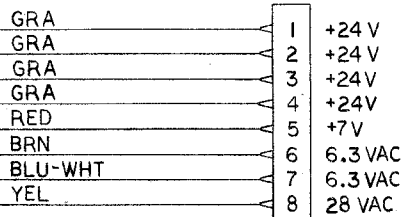
TO LAMP DRIVER UNIT

J2



TO PLAYFIELD

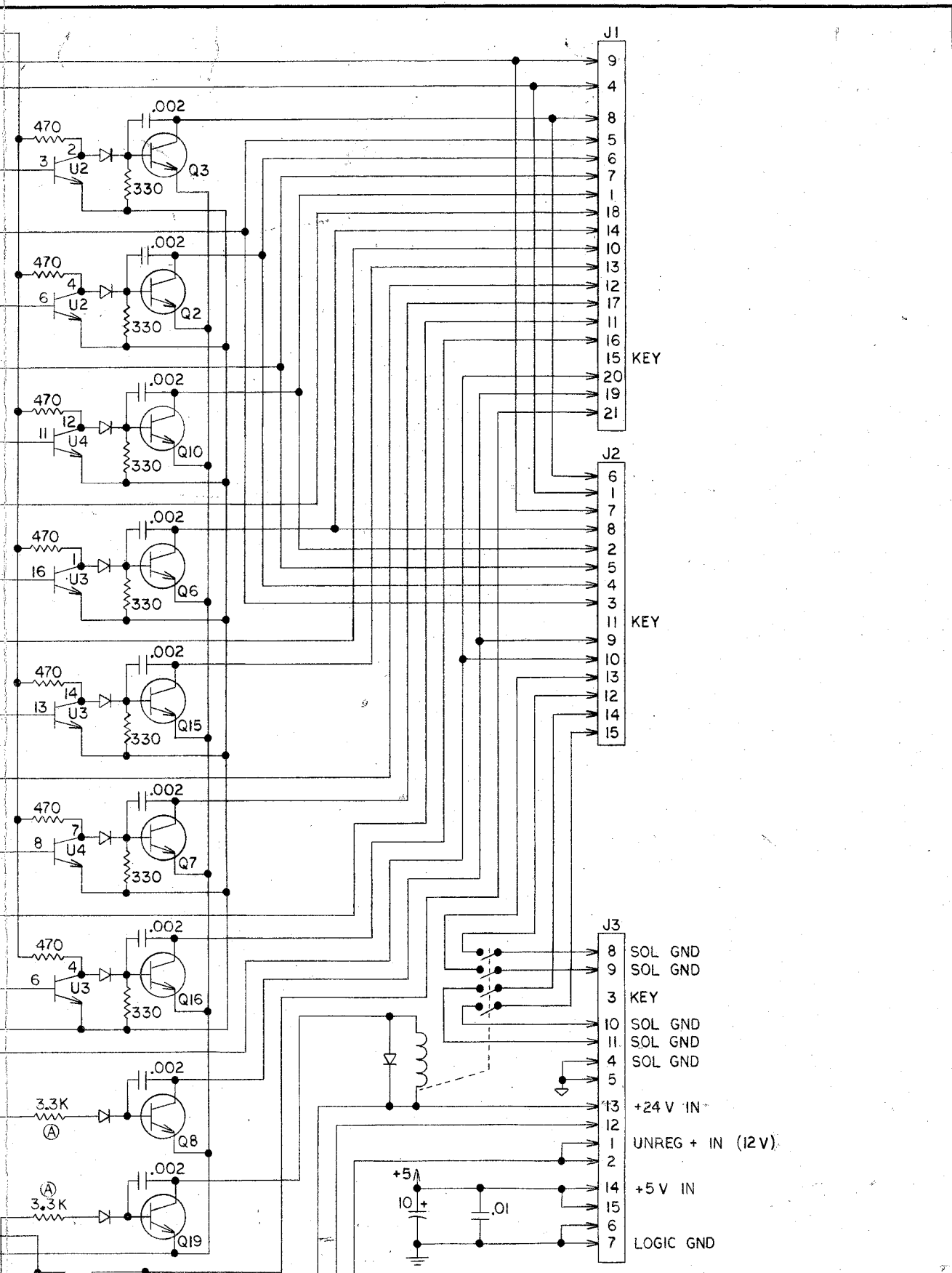
J4



REVISION	DATE	CHANGE	BY
A	10-27-78	WHS / MFD	RW

GAME PLAN INCORPORATED
140 LIVELY BOULEVARD
ELK GROVE VILLAGE, IL 60007

SCALE:	APPROVED BY:	DRAWN BY: <i>RW</i>
DATE: 5-24-78		REVISED:
POWER SUPPLY SCHEMATIC		DRAWING NUMBER 02-70005C



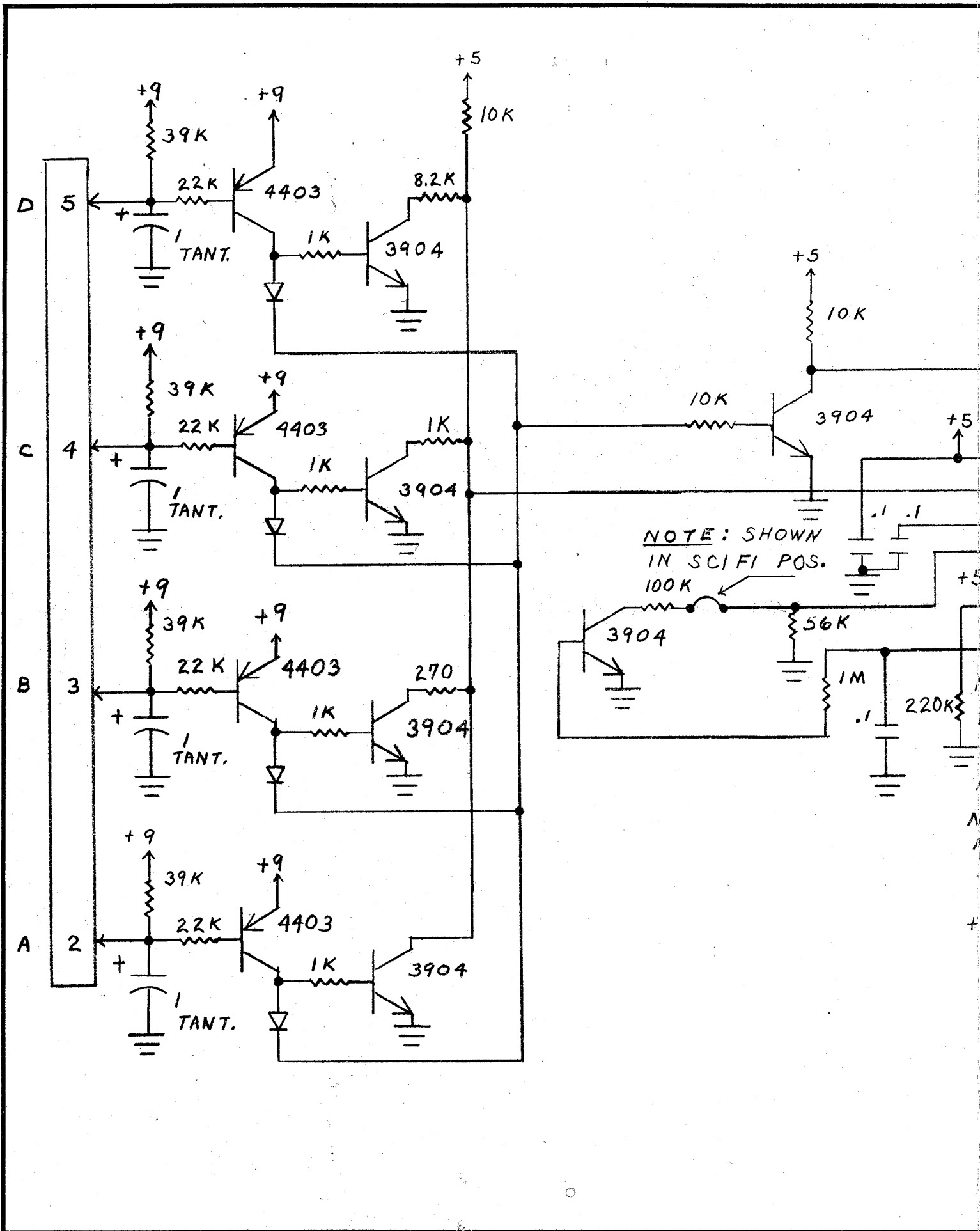
- J1
- 9
- 4
- 8
- 5
- 6
- 7
- 1
- 18
- 14
- 10
- 13
- 12
- 17
- 11
- 16
- 15
- 20
- 19
- 21
- J2
- 6
- 1
- 7
- 8
- 2
- 5
- 4
- 3
- 11
- 9
- 10
- 13
- 12
- 14
- 15
- J3
- 8 SOL GND
- 9 SOL GND
- 3 KEY
- 10 SOL GND
- 11 SOL GND
- 4 SOL GND
- 5
- 13 +24 V IN
- 12
- 1 UNREG + IN (12V)
- 2
- 14 +5 V IN
- 15
- 6
- 7 LOGIC GND

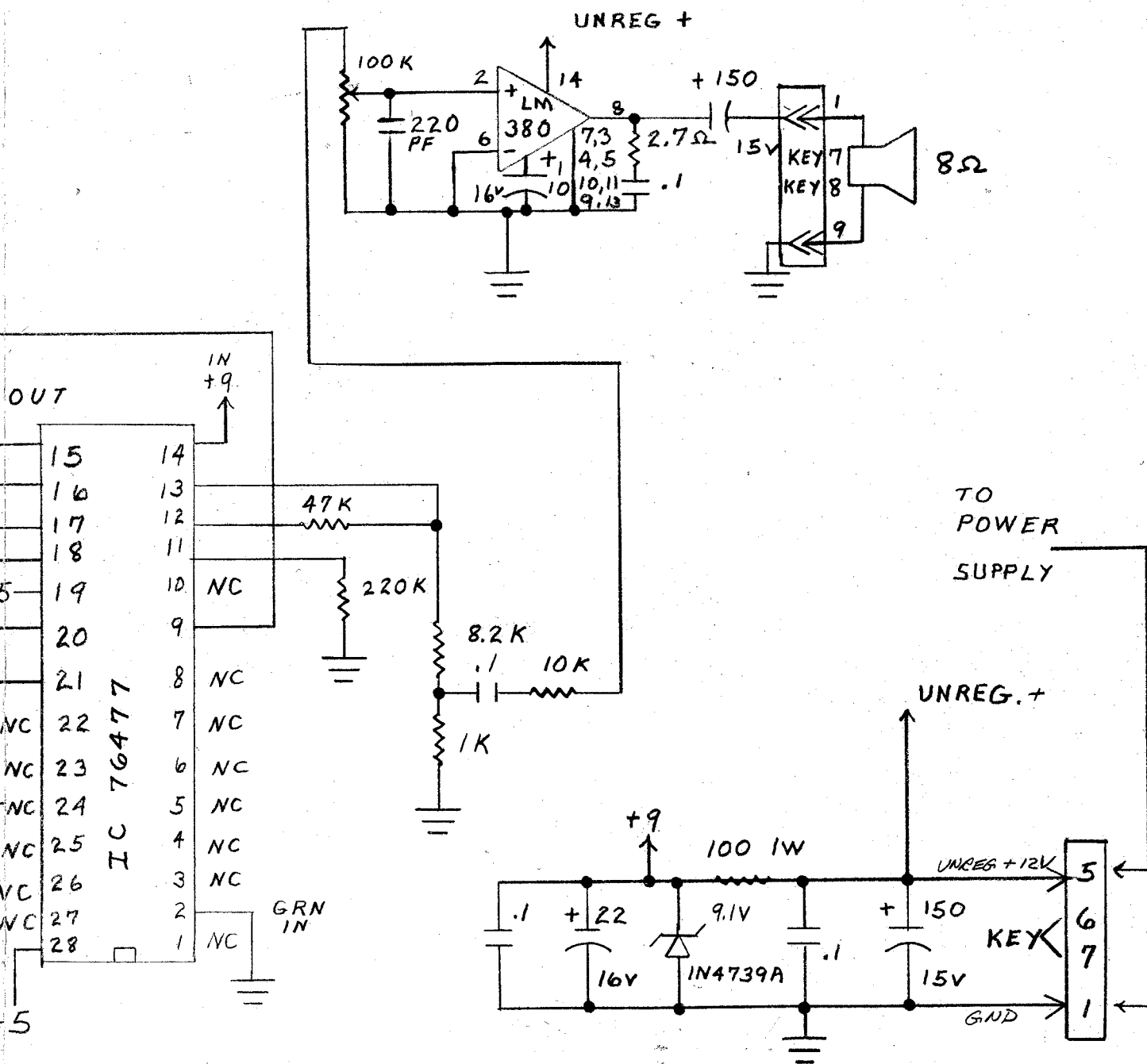
KEY

KEY

GAME PLAN INCORPORATED
 140 LIVELY BOULEVARD
 ELK GROVE VILLAGE, IL 60007

SCALE:	APPROVED BY:	DRAWN BY: <i>AW</i>
DATE: 5-11-78		REVISED: <i>AW</i>
		A 8-9-78
SDU-1 SOLENOID DRIVER		DRAWING NUMBER 02-70004C





Game Plan Inc. 1515 W. Fullerton Ave. Addison Ill. 60101			
SCALE:	APPROVED BY:	DRAWN BY JAK	
DATE: 11-6-78		REVISED	
Mat'l.			
SSU-/SOUND SIMULATOR		DRAWING NUMBER 02-70009B	